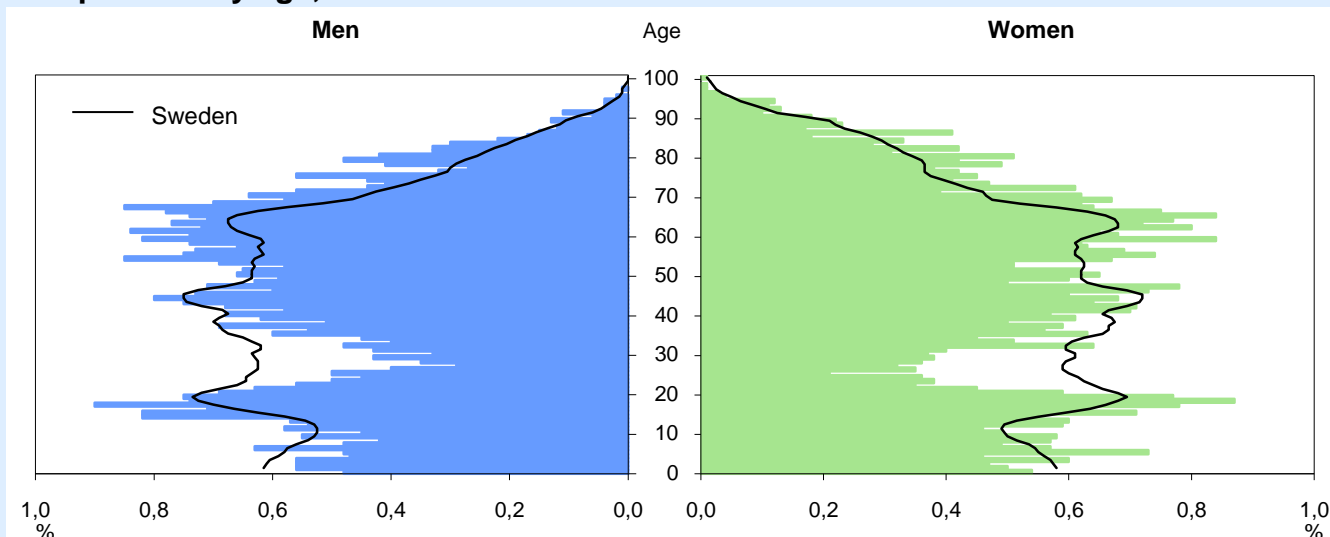


Kinda Municipal facts

Land area: 1 135 sq km

Inhabitants/sq km: 9

Population by age, 2009



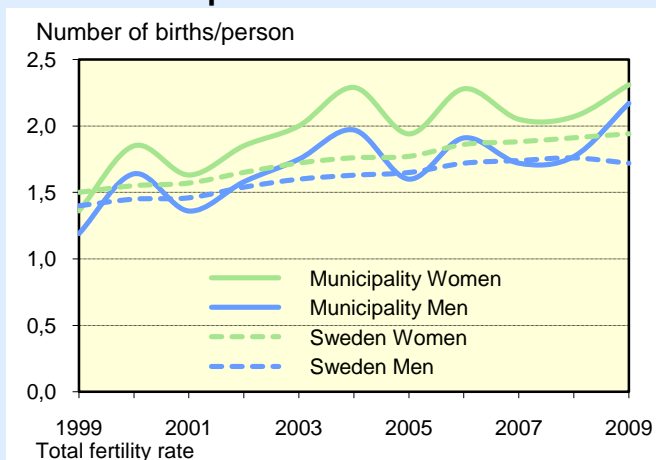
Population by age, 2009

Age	Percentage distribution Municipality			Sweden		
	M	W	Tot	M	W	Tot
0-6	7	8	8	8	8	8
7-15	10	10	10	10	9	10
16-19	6	6	6	6	5	6
20-24	6	4	5	7	6	6
25-44	21	21	21	27	26	26
45-64	28	27	28	26	25	26
65-79	16	16	16	12	13	13
80-	5	8	6	4	7	5
Total, %	100	100	100	100	100	100
Total (thou)	5	5	10	4 649	4 692	9 341

Population trends, 1999-2009

Year (31 Dec.)	Population Number	Excess of births over deaths	Net migration	
			M	W
1999	10 105	-45	-63	-37
2000	10 129	-37	39	22
2001	10 096	-21	-19	7
2002	10 014	-51	-19	-12
2003	9 981	-42	0	9
2004	9 953	-11	-18	3
2005	9 946	-36	17	14
2006	9 918	-32	3	2
2007	9 947	-18	42	4
2008	9 885	-33	-14	-16
2009	9 811	-36	-24	-12

Live births per woman/man



Migrations, 2009

	Men	Women
In-migration	197	215
within the county	92	104
from another county	70	80
from another country	35	31
Of which, ages 18-24	38	64
Out-migration	221	227
within the county	125	131
to another county	87	88
to another country	9	8
Of which, ages 18-24	79	95
Net migration	-24	-12

Births and deaths, 2009

Number	Men	Women
Births	46	54
Deaths	64	72

Foreign born, 2009

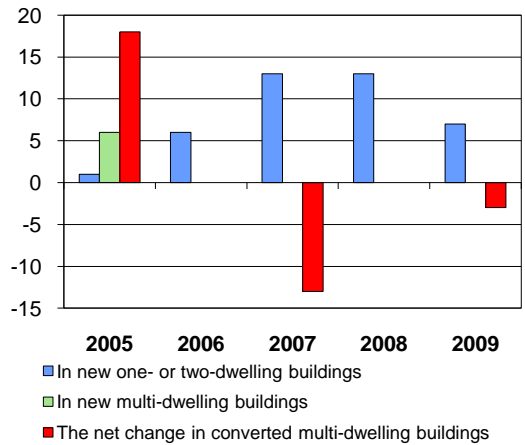
Prop. (%) of all inhabitants	M	W	Tot
Municipality	5	6	6
Sweden	14	15	14

Seats in the Municipal Council

Political party	Number of seats after the election			
	2002		2006	
	Men	Women	Men	Women
Moderate Party	4	1	5	1
Centre Party	3	5	3	5
Liberal Party	2	1	1	0
Christian Democratic Party	2	2	1	2
Green Party	1	1	1	1
Social Democratic Party	7	8	7	7
Left Party	2	0	1	0
Other parties	0	0	0	0
All parties	21	18	19	16

Completed/converted dwellings

Number of dwellings



Population by level of education, 31 December 2009

Level of education	Percentage distribution								
	Municipality			County			Sweden		
	M	W	Tot	M	W	Tot	M	W	Tot
Compulsory schooling	22	12	17	16	13	15	16	12	14
Upper secondary	57	57	57	51	47	49	50	46	48
Post-secondary education	20	30	25	32	38	35	32	40	36
Unknown	1	1	1	2	2	2	2	2	2
Total, %	100	100	100	100	100	100	100	100	100
Total (1 000)	3	3	5	128	120	248	2 772	2 690	5 462

Refers to age group 20–64

Employed by age group, 2008

Municipality	Prop. (%) of all within ages		
	Men	Women	Total
20–24	68	56	63
25–44	90	83	86
45–64	86	80	83
20–64	86	80	83
County			
20–24	54	48	51
25–44	83	78	81
45–64	80	74	77
20–64	78	73	75
Sweden			
20–24	62	57	60
25–44	84	79	81
45–64	79	76	78
20–64	79	75	77

Refers to the night population

Night population:
residing in the municipality, regardless of workplace

Day population (jobs):
working in the municipality, regardless of residence

Employment by sector, 2008

Municipality	Night population		Day population	
	Men	Women	Men	Women
Municipality	2 492	2 122	1 817	1 736
Business sector	2 217	1 032	1 643	879
Public sector	275	1 090	174	857
County (1 000)	104	90	102	89
Business sector	89	47	86	46
Public sector	15	43	15	43
Sweden (1 000)	2 308	2 110	2 300	2 106
Business sector	1 977	1 157	1 970	1 155
Public sector	331	952	331	951

Number of persons ages 16 and over

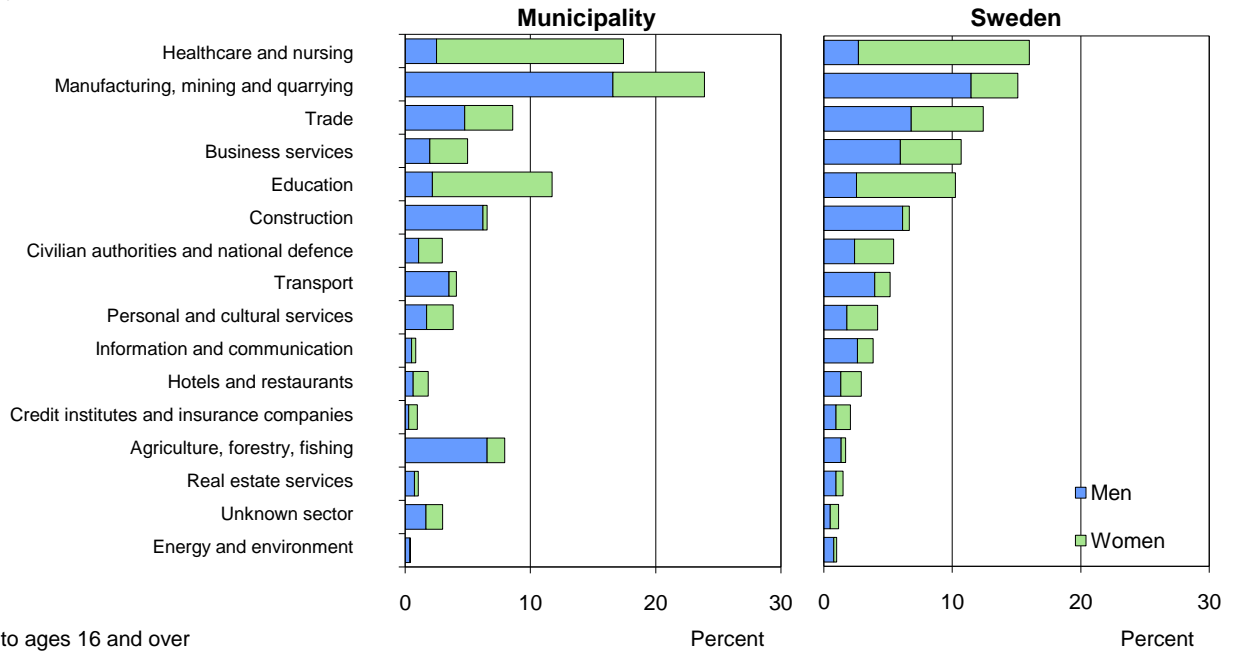
Commuting, 2008

	Men	Women
Commuting in	338	265
within the county	227	197
from another county	111	68
Commuting out	1 013	651
within the county	700	530
to another county	313	121
Net commuting	-675	-386

Number of persons ages 16 and over

Employment by industry, 2008

Industry



Refers to ages 16 and over

Percent

Percent

Employed in the municipality, regardless of residence (day population)

Self-employed, 2008

	Men		Women	
	Number of employed	Self-empl. in lim.comp.	Number of employed	Self-empl. in lim.comp.
1	35	256	3	116
2-4	49	35	19	12
5-9	33	6	3	1
10-	26	2	4	2
Total	143	299	29	131

Number of persons ages 16 and over Refers to the day population

Sickness/activity compensation, 2009

	Prop. (%) of all within ages		
	Men	Women	Total
Municipality			
55-59	10	21	15
60-64	18	31	25
20-64	6	13	9
Sweden			
55-59	14	22	18
60-64	21	31	26
20-64	7	11	9

Replace benefits for disability pension and sickness

Job seekers

	Proportion (%) of all within age group								
	Municipality			County			Sweden		
	M	W	Tot	M	W	Tot	M	W	Tot
March, 2009									
Ages 20-64	5	4	5	7	6	7	6	5	6
Unemployed	4	3	4	5	3	4	5	3	4
Labour market progr.	1	1	1	3	3	3	2	2	2
Of which, ages 20-24	17	8	14	13	9	11	13	7	10
Number, ages 20-64	149	107	256	9 039	7 182	16 221	176 297	128 405	304 702
March, 2010									
Ages 20-64	7	6	7	9	8	8	8	7	7
Unemployed	4	3	4	5	4	4	5	4	4
Labour market progr.	3	2	3	4	4	4	3	3	3
Of which, ages 20-24	21	17	20	14	11	13	14	10	12
Number, ages 20-64	193	149	342	11 331	9 090	20 421	224 010	177 196	401 206

Employment and employed, 2008 – Total

Industry	Day population				Night population			
	Municipality	County	Sweden	Municipality	County	Sweden		
	Number	%	%	%	Number	%	%	%
Agriculture, forestry, fishing	282	8	2	2	300	7	2	2
Manufacturing, mining and quarrying	849	24	18	15	982	21	18	15
Energy and environment	14	0	1	1	24	1	1	1
Construction	232	7	6	7	325	7	6	7
Trade	305	9	11	12	439	10	11	12
Transport	145	4	5	5	190	4	5	5
Hotels and restaurants	65	2	3	3	79	2	3	3
Information and communication	30	1	3	4	67	1	3	4
Credit institutes and insurance companies	34	1	1	2	53	1	1	2
Real estate services	37	1	2	1	56	1	1	1
Business services	177	5	10	11	328	7	10	11
Civilian authorities and national defence	105	3	5	5	195	4	5	5
Education	417	12	11	10	518	11	11	10
Healthcare and nursing	619	17	17	16	786	17	17	16
Personal and cultural services	136	4	4	4	163	4	4	4
Unknown sector	106	3	1	1	109	2	1	1
Total	3 553	100	100	100	4 614	100	100	100
Refers to ages 16 and over								

Employment and employed, 2008 – Men

Industry	Day population				Night population			
	Municipality	County	Sweden	Municipality	County	Sweden		
	Number	%	%	%	Number	%	%	%
Agriculture, forestry, fishing	232	13	3	3	249	10	3	3
Manufacturing, mining and quarrying	589	32	27	22	753	30	26	22
Energy and environment	13	1	1	1	23	1	1	1
Construction	220	12	11	12	312	13	11	12
Trade	169	9	12	13	252	10	12	13
Transport	124	7	7	8	156	6	7	8
Hotels and restaurants	22	1	2	3	23	1	2	3
Information and communication	18	1	4	5	52	2	4	5
Credit institutes and insurance companies	10	1	1	2	19	1	1	2
Real estate services	26	1	2	2	42	2	2	2
Business services	70	4	11	11	184	7	11	11
Civilian authorities and national defence	38	2	5	5	86	3	5	5
Education	77	4	6	5	117	5	5	5
Healthcare and nursing	89	5	5	5	97	4	5	5
Personal and cultural services	61	3	3	3	67	3	3	3
Unknown sector	59	3	1	1	60	2	1	1
Total	1 817	100	100	100	2 492	100	100	100
Refers to ages 16 and over								

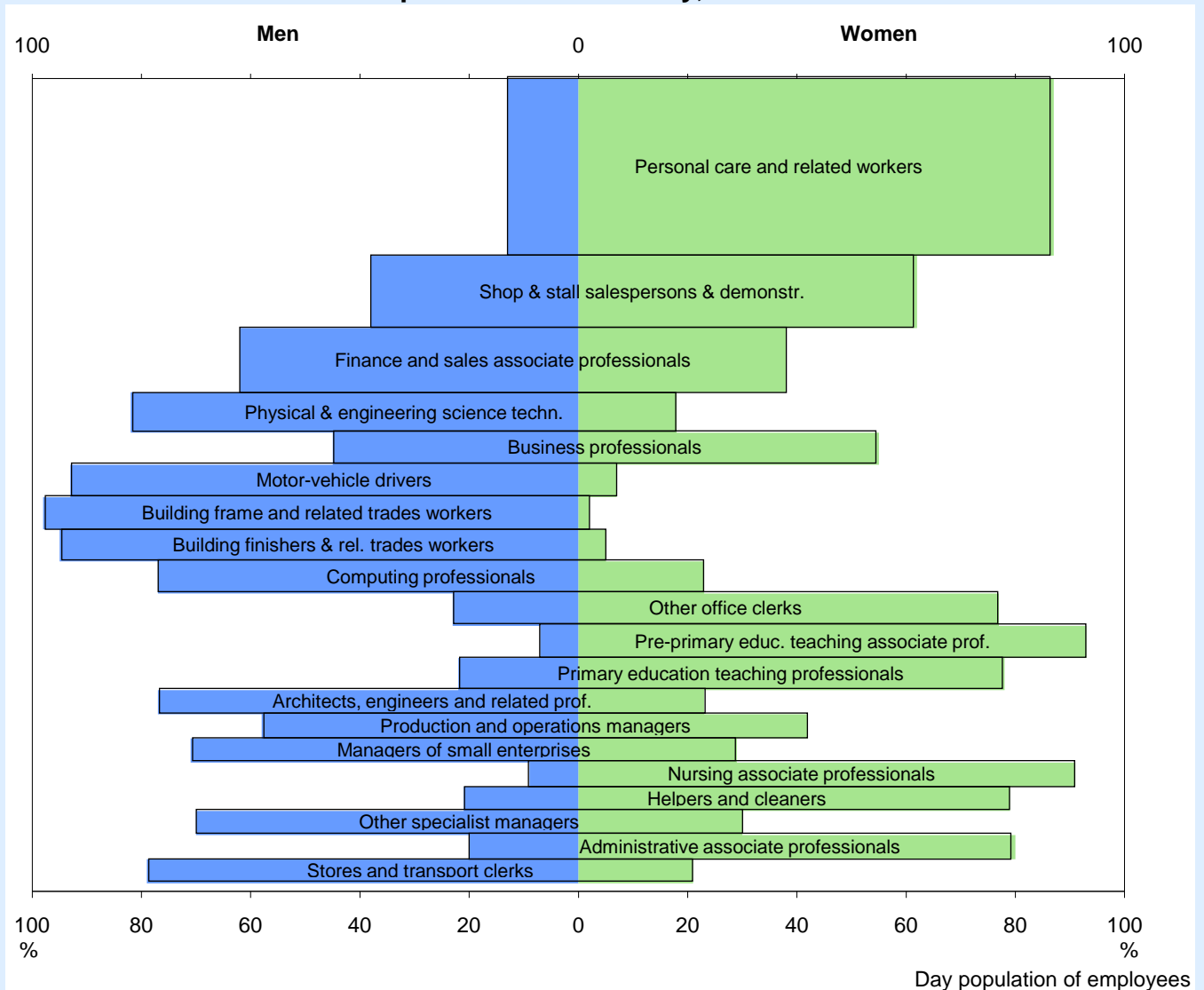
Employment and employed, 2008 – Women

Industry	Day population				Night population			
	Municipality	County	Sweden	Municipality	County	Sweden		
	Number	%	%	%	Number	%	%	%
Agriculture, forestry, fishing	50	3	1	1	51	2	1	1
Manufacturing, mining and quarrying	260	15	8	8	229	11	8	8
Energy and environment	1	0	0	0	1	0	0	0
Construction	12	1	1	1	13	1	1	1
Trade	136	8	11	12	187	9	11	12
Transport	21	1	2	2	34	2	2	3
Hotels and restaurants	43	2	3	3	56	3	3	3
Information and communication	12	1	2	3	15	1	2	3
Credit institutes and insurance companies	24	1	1	2	34	2	2	2
Real estate services	11	1	1	1	14	1	1	1
Business services	107	6	9	10	144	7	9	10
Civilian authorities and national defence	67	4	6	6	109	5	6	6
Education	340	20	17	16	401	19	17	16
Healthcare and nursing	530	31	30	28	689	32	30	28
Personal and cultural services	75	4	5	5	96	5	5	5
Unknown sector	47	3	1	1	49	2	1	1
Total	1 736	100	100	100	2 122	100	100	100
Refers to ages 16 and over								

The 20 most common occupations in the municipality, 2008

Day population of employees	Number		Perc.distr.			Sex distr. (%)	
	Men	Women	M	W	Tot	M	W
Personal care and related workers	59	518	4	33	19	10	90
Wood-proc.- & papermaking-plant operators	189	71	13	4	9	73	27
Shop & stall salespersons & demonstr.	39	104	3	7	5	27	73
Building frame and related trades workers	108	0	7	0	4	100	0
Helpers and cleaners	10	96	1	6	3	9	91
Motor-vehicle drivers	94	7	6	0	3	93	7
Primary education teaching professionals	16	78	1	5	3	17	83
Assemblers	50	39	3	2	3	56	44
Finance and sales associate professionals	46	39	3	2	3	54	46
Machinery mechanics and fitters	74	2	5	0	2	97	3
Pre-primary educ. teaching associate prof.	2	71	0	4	2	3	97
Building finishers & rel. trades workers	62	4	4	0	2	94	6
Managers of small enterprises	49	9	3	1	2	84	16
Agricultural & other mobile-plant operators	51	0	3	0	2	100	0
Production and operations managers	29	19	2	1	2	60	40
Sec. education teaching professionals	22	24	2	2	2	48	52
Other office clerks	7	39	0	2	2	15	85
Numerical clerks	5	36	0	2	1	12	88
Other specialist managers	29	9	2	1	1	76	24
Housekeeping & rest. serv. workers	6	31	0	2	1	16	84
Total 20 occupations	947	1 196	65	76	70	44	56
All occupations	1 459	1 583	100	100	100	48	52

The 20 most common occupations in the country, 2008



Preschool activities and care of school-age children 2009

Enrollment	Municipality		Sweden
	Number	%	%
Pre-school, 1–5	417	80	82
Leisure time centre, 6–12	296	41	52
Pedagogical child care, 1–5	2	0	4
6–12	0	0	0
Proportion (%) of all within age group			

Elder care - Refers to ages 80 and over

	Prop. (%) of all within group			
	Municipality		Sweden	
	M	W	M	W
Home-help services 1)	28	44	18	26
Special housing 1)	12	18	11	18
Transport service 1)	23	36	28	42
1) 31 December 2008				

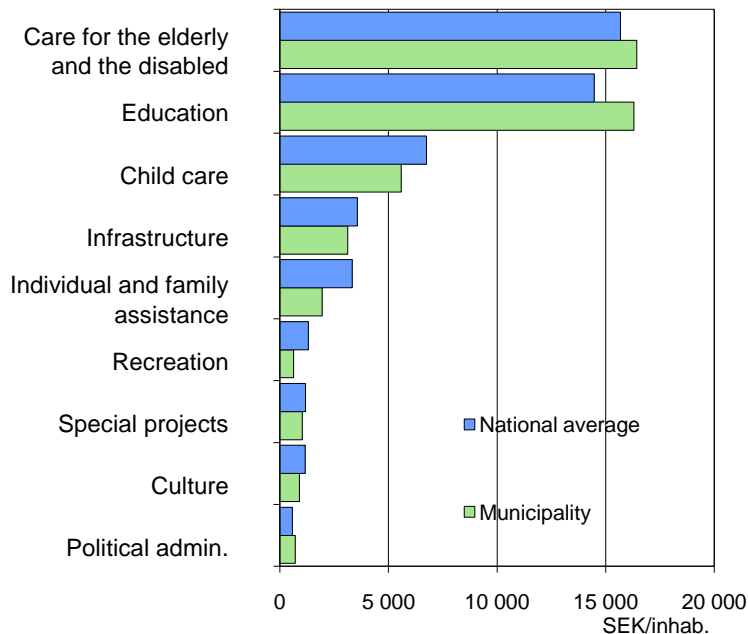
Total income, 2008

	SEK thousand		
	Men	Women	Total
Average income			
Municipality	279	201	242
County	281	207	245
Sweden	298	222	261
Median income			
Municipality	279	206	242
County	277	212	242
Sweden	283	222	250
Income from employm. and business, age gr. 20–64			

Social assistance, 2008

Type of household	Recipient households		Sweden
	Municipality	%	
	Number	%	%
Cohabiting			
without children	10	5	6
with children	26	13	12
Single men			
without children	68	34	40
with children	12	6	3
Single women			
without children	48	24	25
with children	35	18	15
Total	199	100	100

Expenditures SEK, per inhabitant, 2008



Local taxes, 2010

Municipality	
Total local tax rate	31,00
of wich to municipality	21,15
Tax base, SEK/inhab.	151 725
Tax base, index	88
County average	
Total local tax rate	30,94
of wich to municipality	21,09
Tax base, SEK/inhab.	162 141
Tax base, index	94
National average	
Total local tax rate	31,56
of wich to municipality	20,74
Tax base, SEK/inhab.	173 027
Tax base, index	100

Index, Sweden = 100